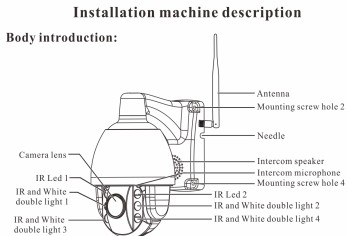
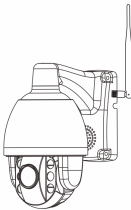


2.5 inch wireless ptz camera User's Manual



Bracket installation instructions:

When installing, first attach the bracket hole drawing to the wall, align the hole with the screw hole, screw the lower two screws according to the drawing, and then align the hole below the ball bracket with the screw, and finally put Screw the top two screws up.

TF card instructions:

Unscrew the 2 screws on the TF card on the dome (as shown in picture 1), remove the small metal cover; find the slot of the TF card, insert the TF card into the lens in the direction of the lens (as shown in picture 2); After that, cover the back cover and fasten the screws.



Mobile phone connection method:

Mobile APP installation

Make sure the phone is connected to the network (4G/wifi), scan the QR code of the corresponding mobile phone system below, download the mobile app to install, or search for CamHi directly in the application market!



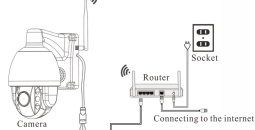
Apple / Android client QR code

For more detailed information drawing, please visit the website:

Method 1: The camera is connected through the network cable.

1. Camera connection diagram

1. First plug in the network cable, the network cable needs to be connected to the router connected to the mobile phone wifi; 2. The camera is powered; 3. set up the wifi connection near the router, then unplug the network cable, get the installation location to install. (The location of the installation is guaranteed to be within the coverage of the configured wifi)



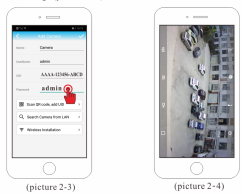
Reset button
The ball machine is powered Press and hold the reset button for 20 seconds Factory reset
Note: Do not extend the power output

2. Phone connection camera

1. Open the installed APP, click Add Camera (picture 2-1); click on the LAN to search for UID, and then click on the searched device (picture 2-2).

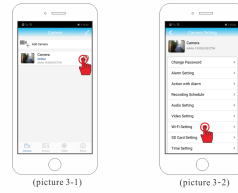


2. Click the ID of the searched camera, enter the default password of the camera admin, (picture 2-3); click Finish; return to the list of software devices, click on the added device to see the image (picture 2-4).



3. Set the camera list (as shown in picture 3-1); enter the camera settings and click the wifi settings (picture 3-2).

1. Click on the camera list (as shown in picture 3-1); enter the camera settings and click the wifi settings (picture 3-2).

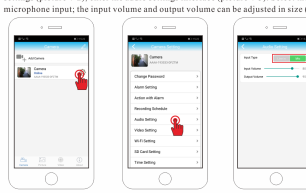


2. Enter the management wifi network (picture 3-3); find the wireless wifi input password in your home (picture 3-4); the tick behind the wireless network shows that it is connected to the wireless. (Tips: After wifi is connected, you can unplug the network cable and realize wifi wireless connection.)

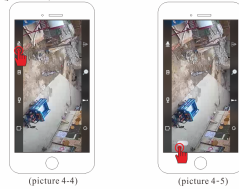


4. Audio intercom settings

1. In the APP interface, click on the camera settings (picture 4-1); click on the audio settings (picture 4-2); enter the audio settings interface (picture 4-3). Select the microphone input; the input volume and output volume can be adjusted in size (0-100).



2. Return to the main screen of monitoring, click the speaker icon to open the monitoring state (as shown in picture 4-4); press and hold the microphone icon to perform the intercom (picture 4-5).



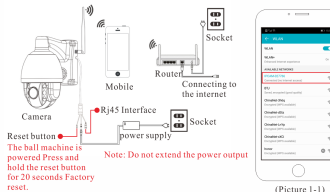
Dear users, you are welcome to use this product. Before using this product, please read the operation guide carefully and save this operation guide for future reference.

pay attention:
1. the power adapter DC 12V end can not be extended, the extension will lead to insufficient power supply, long-term power supply will burn the motherboard;
2. please test the product before receiving it, and then install it on the pole or wall;
3. When installing, you need to install the two screws under the bracket first, and then install the two screws on the bracket;
If the customer is damaged due to improper installation, the customer will not enjoy the free warranty and free return service.

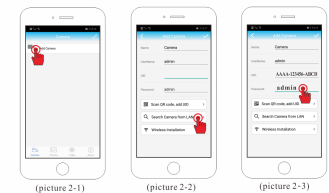
Method 2: The camera is connected through the AP hotspot setting

1. Quick installation diagram

After connecting the power of the camera (no need to connect the network cable), the camera will perform self-test after the power is turned on normally (automatic left and right rotation, up and down rotation). After the self-test, wait for about 1 minute. At this time, the camera will generate a wifi named IPCAM. Beginning. Then go back to the mobile phone just installed APP, open the mobile phone WLAN, find the wifi of the camera AP hotspot IPCAM-XXXXXX, click the connection, if the lock status, the password is 01234567, no lock password is empty, as shown in Figure 2-1 below, The phone has been connected to the AP hotspot of the camera.



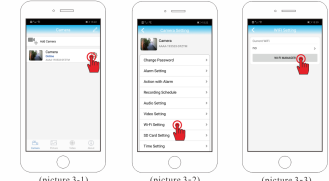
Reset button
The ball machine is powered Press and hold the reset button for 20 seconds Factory reset.
Note: Do not extend the power output



2. Set the camera's wireless network connection

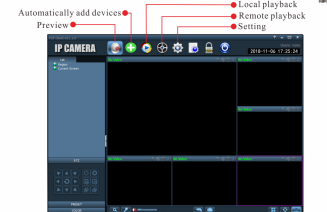
1. Click on the camera list (as shown in picture 3-1); enter the camera settings and click the wifi settings (picture 3-2).

2. Enter the management wifi network (picture 3-3); find the wireless wifi input password in your home; the tick behind the wireless network shows that it is connected to the wireless. (Tip: After configuring WiFi in AP mode, AP mode will disappear.) If you want to use AP mode, you need to restore the camera to factory settings.)



Computer client connection

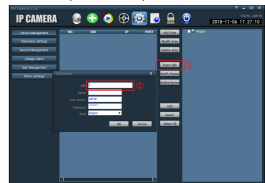
1. Download the HIPP2 client management software on your computer and open the software after installation.



2. Click the navigation bar to set the option. (prompt to enter the login password, click the OK without entering the password) pop up the interface: On the right side, find the Add Area button; pop up the Add Area dialog box to fill in the area name (can be filled in); click the OK button.



3. Click on the input device UID on the right side; pop up the Add Device dialog box, fill in the UID (UID is viewed in the mobile app) and the name (you can fill it out or fill it in); the username and password are OK by default; click the OK button.



4. Click the main interface preview, double-click the left side of the list to add a good area name to pop up the device name and then double-click to see the image. For more settings, click System Settings.



More product sizes

2.5 inch ptz



4 inch ptz



4 inch ptz



4 inch ptz



4.5 inch ptz



7 inch ptz

