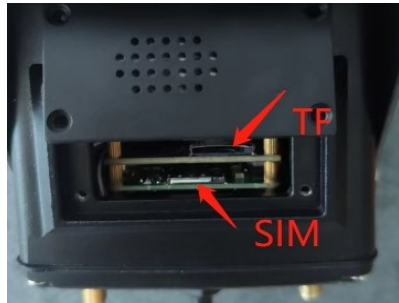


4G GPS Vehicle Camera

Brief introduction (1)

- ◆ 1、 OPEN rear cover of IPC, insert TF card(Sandisk 256G Max.). Insert the SIM, copper pins face to mainboard, Nick side to inward, then fix it.



- ◆ 2、 Fix the GPS and 4G antenna, GPS antenna face to sky and make sure without obstacle effecting signal.

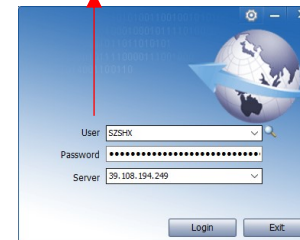


- ◆ 3、 Power up with DC 12-28V from vehicles, support extended cable, make sure waterproof at cable connection.



- ◆ 4、 Power up then run CMSV6 or CMSV7(APP), enter account/passwords/IP as wrote at label.(Scan QR code to download APP)

Account/Passwords/Server IP



IOS

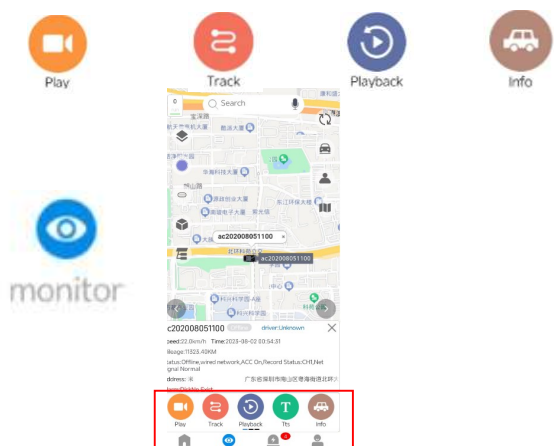


Android

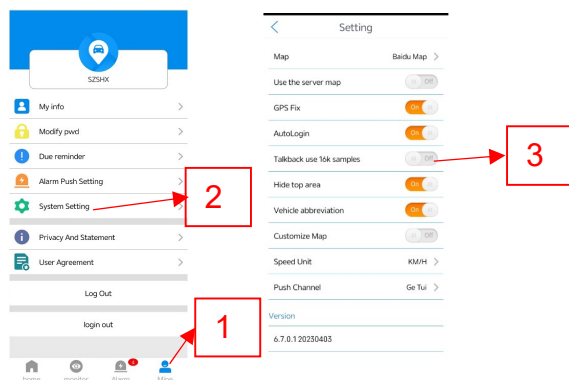
Brief introduction (2)

◆ 5、Short operation of APP

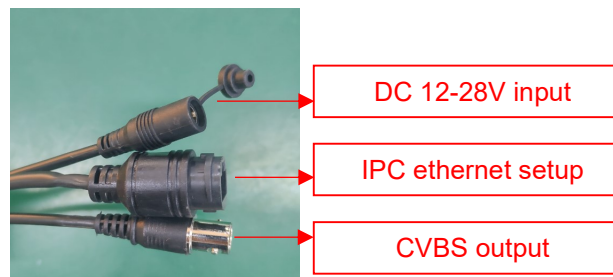
“Monitor” , This functions includes Real time video/Track playback/Video Playback/Cars Data etc.



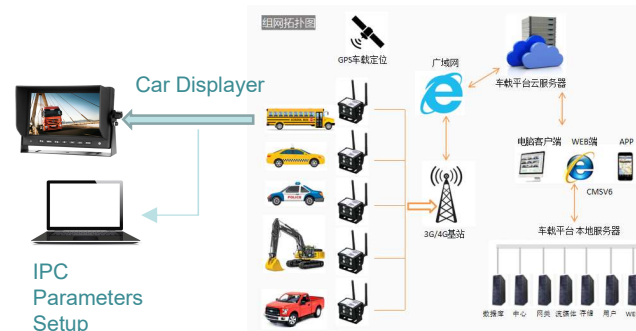
Close “16K samples” option first time run APP as following steps.



◆ 6、BNC connector could provide the analog images to vehicle small displayer.



A> 4G camera networking diagram.



B> Wifi Camera networking diagram:

