

Long Standby Wi-Fi Audio Recorder

User Manual

Version: August, 2024

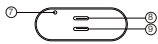
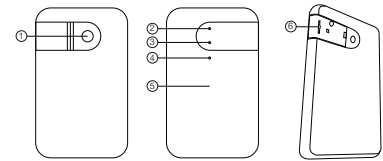


Size: 105x60x20 mm



1

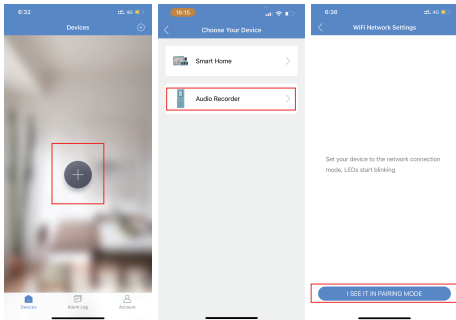
Product structure



- ① ON/OFF Switch
- ② Reset
- ③ Charging indicator
- ④ Working indicator
- ⑤ Strong magnet
- ⑥ Micro SD card port
- ⑦ Microphone
- ⑧ TypeC for charging
- ⑨ Dummy TypeC port

4

Step 3: Connect WiFi
1. Open APP CamSC Pro >> Click + >> Audio Recorder >> Device in pairing mode >> CAM-xxxxxx.



8

Hardware Tips:

Working indicator status

- Long press the bottom button ON/OFF for 2 seconds, the blue indicator is on means the device is on. And release the button and working indicator will be off.
- Short press the bottom button ON/OFF one time, the blue indicator blink quickly means the device is ready to pair.
- Working indicator will be off once device has been connected with local Wi-Fi.

Charging indicator status

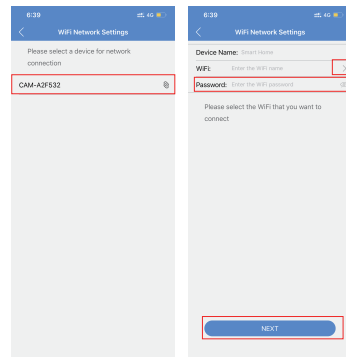
Red light blink means charging, and solid when fully charged

Turn Off & Reset

- Long press ON/OFF for 2 seconds, the blue indicator blink twice and off means the device is turned off.
- Reset pin press Reset hole for 2 seconds, device then is restored to factory default.

5

2. Click > at the end of WiFi to select the local 2.4G Wi-Fi, then input password.
Click NEXT and wait around 10 seconds to finish the configuring;
Device Binding Successful and online now.



9

Quick guide of Wi-Fi Audio Recorder function

- Download & Install Free App <CamSC Pro> from App Store or Google Play;
Tips: Please allow "CamSC Pro" to notification, Bluetooth and location while using the App.
- Enter App, select your region at the top right corner and register;
Tips: If a code doesn't arrive, please check the spam folder first.
- Insert micro SD card --> Long press the bottom button ON/OFF for 2 seconds and release --> Press the bottom button ON/OFF one time again to pair (Blue indicators blinking = Pairing model is ready now.)
- Enter App, Click + >> Audio recorder >> Pairing Mode >> Click device name >> Select Wi-Fi >> Input password >> NEXT.
- Device online in around 10 seconds & Wi-Fi live audio is ready.

P.S.: Contact local dealer for tutorial video setting up.

2

Wi-Fi Camera Connection Setting

Step1: CamSC Pro APP

1. Scan below QR code or search and download free APP named <CamSC Pro> in Apple APP store, Google play or Electronic market, and install it;

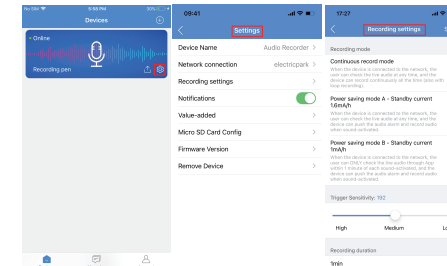


APP: CamSC Pro

Tips: Please allow "CamSC Pro" to notification, Bluetooth and location while using the App.

6

4. Click in APP'S first interface, select Recording Setting can choose the mode, to do device setting (such selection of mode & sensitivity) etc...



10

Overview:

The WiFi Audio Recorder has a classic power bank look and is easy to carry. It offers discreet audio monitoring for peace of mind. With its ultra-long standby and low power consumption feature, you can use this device for continuous recording without worrying about battery life.

Firstly, this recorder is perfect for monitoring audio in live time day and night. It can record live audio based on set sensitivity and push notifications to your mobile device for added security.

Secondly, the WiFi Audio Recorder has a power bank-like appearance, making it easy to carry. It offers excellent recording quality, ensuring high fidelity sound during playback.

Finally, it supports cycle recording, meaning it can overwrite old recordings when storage is full and it can still operate while being charged, ensuring uninterrupted functionality.

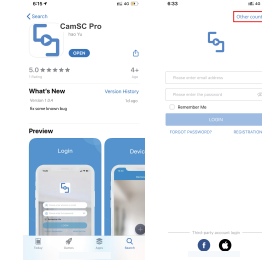
Usages: Audio recorder for Home/ Shop/ Office/ Warehouse security use
Warning : " illegal use is not allowed! Or, there will be consequences to bear!"

In the box:

- 1 x Wi-Fi Audio Recorder
- 1 x Micro SD Card Reader
- 1 x USB Cable
- 1 x User Manual
- 1 x Reset pin

3

2. Open APP CamSC Pro, select current region at the top right corner. Register with email, or third-party account like Facebook or IOS account. (Tips: If a code doesn't arrive, please check the spam folder first.)



- Step 2: Make device ready to pair
- Long press the bottom button ON/OFF for 2 seconds, the blue indicator is on means the device is on. And release the button and working indicator will be off.
 - Short press the bottom button ON/OFF one time, the blue indicator blink quickly means the device is ready to pair.

7

Wi-Fi Audio Recorder Normal Status

Device default with power save mode B, and can be changed. Three models:

- Continuous record mode**
When the device is connected to the network, the user can check the live audio at any time, and the device can record continuously all the time (also with loop recording).
- Power saving mode A - Standby current 1.6mA/h**
When the device is connected to the network, the user can check the live audio at any time, and the device can push the audio alarm and record audio when sound-activated.
- Power saving mode B - Standby current 1mA/h**
When the device is connected to the network, the user can ONLY check the live audio through App within 1 minute of each sound-activated, and the device can push the audio alarm and record audio when sound-activated.

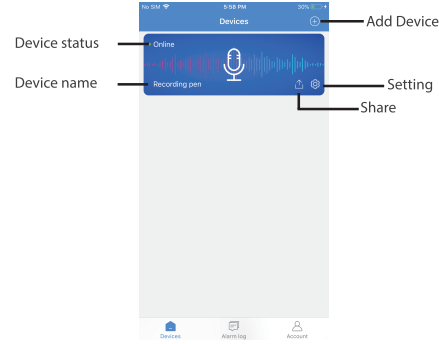
11

Set name: Press the  after the device, select Device Name
 --> Input needed name like Office, Living room etc...

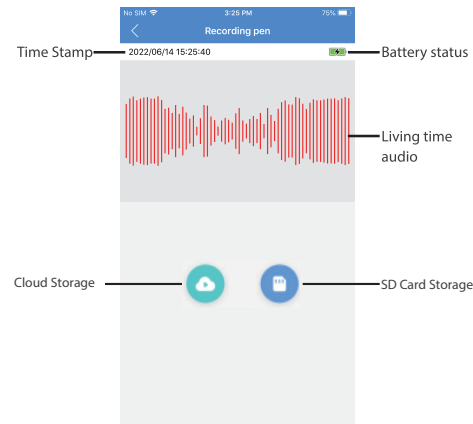


12

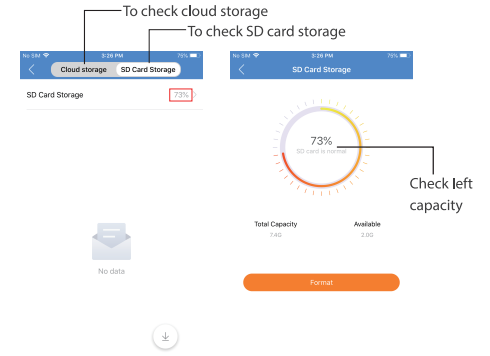
APP Introduction



13

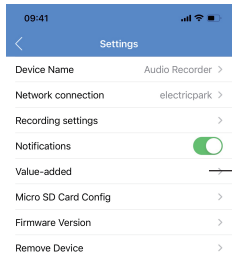


14



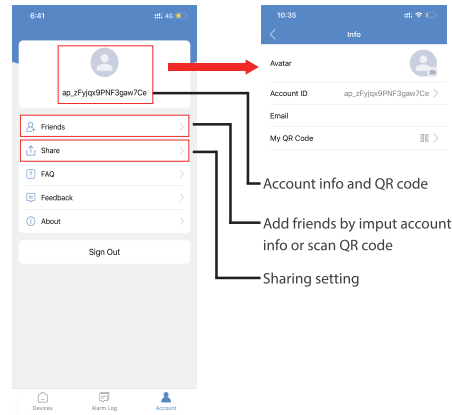
Tips: All audio records default save to SD card. If cloud storage purchased, device will upload the audio records in card to cloud automatically.

15

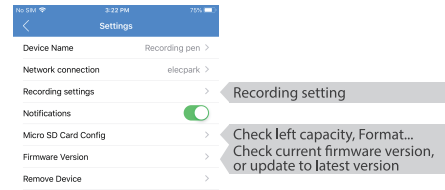


To purchase cloud storage

16



17



18

Specification

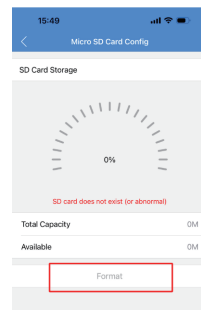
Battery	7500mA
Charging time	Around 12.5hours
Power consumption while working	80mA
Working time of Continuous record mode	Around 3.5days
Standby current - Power saving mode A	1.6mA/h
Standby time - Power saving mode A	Around 5 months
Standby current - Power saving mode B	1mA/h
Standby time - Power saving mode B	Around 9 months

Optional: If need, device can be plugged with external battery for super long term operation (Pls ask manufacturer to add external battery plug when production) .

19

FAQ

- Q: Is device with offline and low power notification?
A: Yes.
- Q: What does the device do when WiFi off?
A: Keep searching WiFi signal 3 mins, 10mins, 1 hour, 2 hours, 5 hours, 24 hours later; If WiFi on, it will be connected to WiFi automatically.
- Q: If the steps in Page 8 can't move forward(Bluetooth Pairing Mode)?
A: Delete the App and Download again to test, and agree all permissions(Allow notification, Bluetooth and location).
- Q: How to charge the product?
A: The red LED indicator flashing indicates charging. It will turn off when the battery is fully charged.
- Q: If device offline and can't read the inserted micro SD card by app after some time normal operation, how to solve this issue?
A: Please re-try the operation and firstly format the inserted card using the app. (As below pic) Then the issue can be solved. [App - Settings - Micro SD Card Config - Format]



21



20