

# Smart doorbell User manual



Smart doorbell connects WiFi or network cable. After visitor presses Call button, Smart phone interacts with doorbell via real time video, full duplex talk, take photos, take videos, Indoor doorbell ring and remind the user.  
Smart doorbell connect the Electric Lock directly or by unlock control. Smart phone and remote control, RFID card can unlock.  
User can monitor the gate via phone anytime anywhere.

## 1 APP introduction

APP's name is Yoosee, free for Android and iOS both.  
A) Download APP at <http://www.yoosee.co>  
B) Search "Yoosee" from APP store or Google Play Store according to phone system  
Note: Select "Only iPhone" on iPad  
C) Scan QR code to download and install  
Window software download at <http://dl1.cloudlinks.cn:8765/dl/exe/CMSsetup.exe>

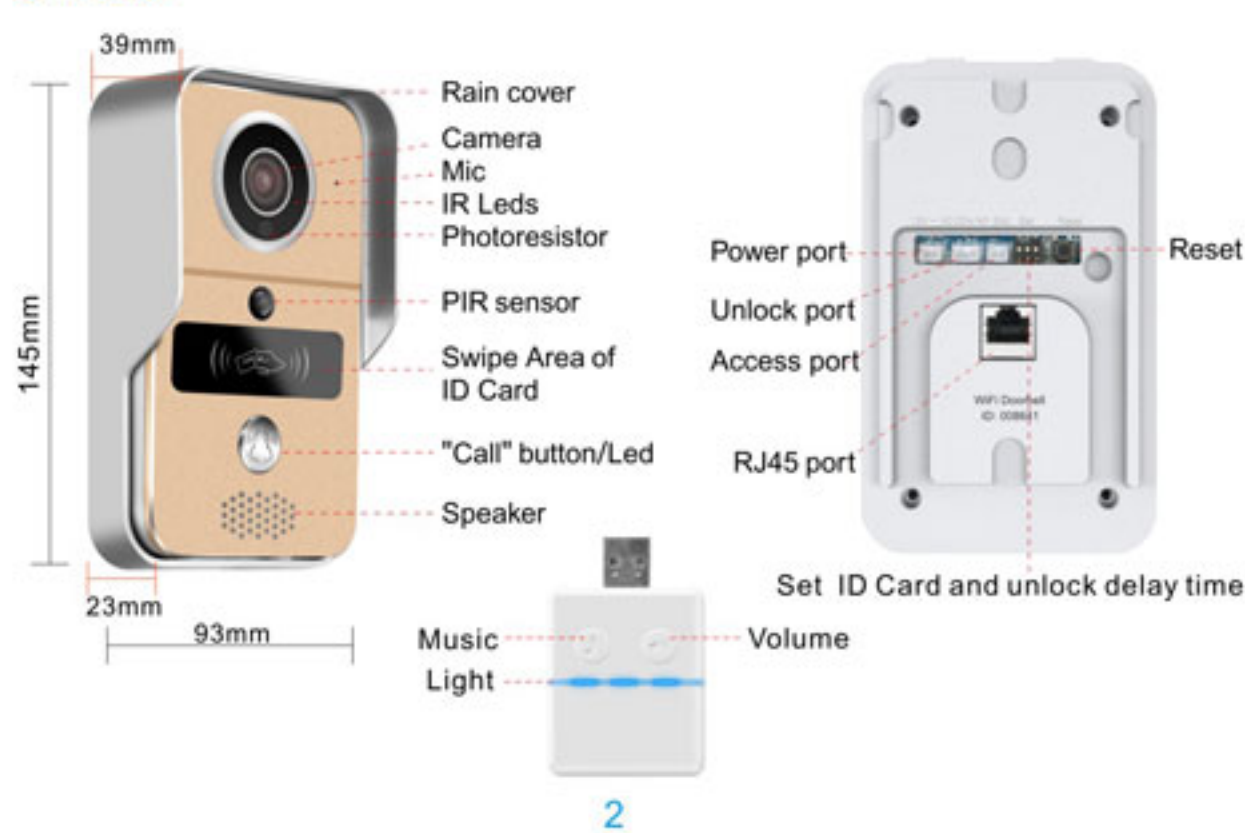


1

## 2 Features

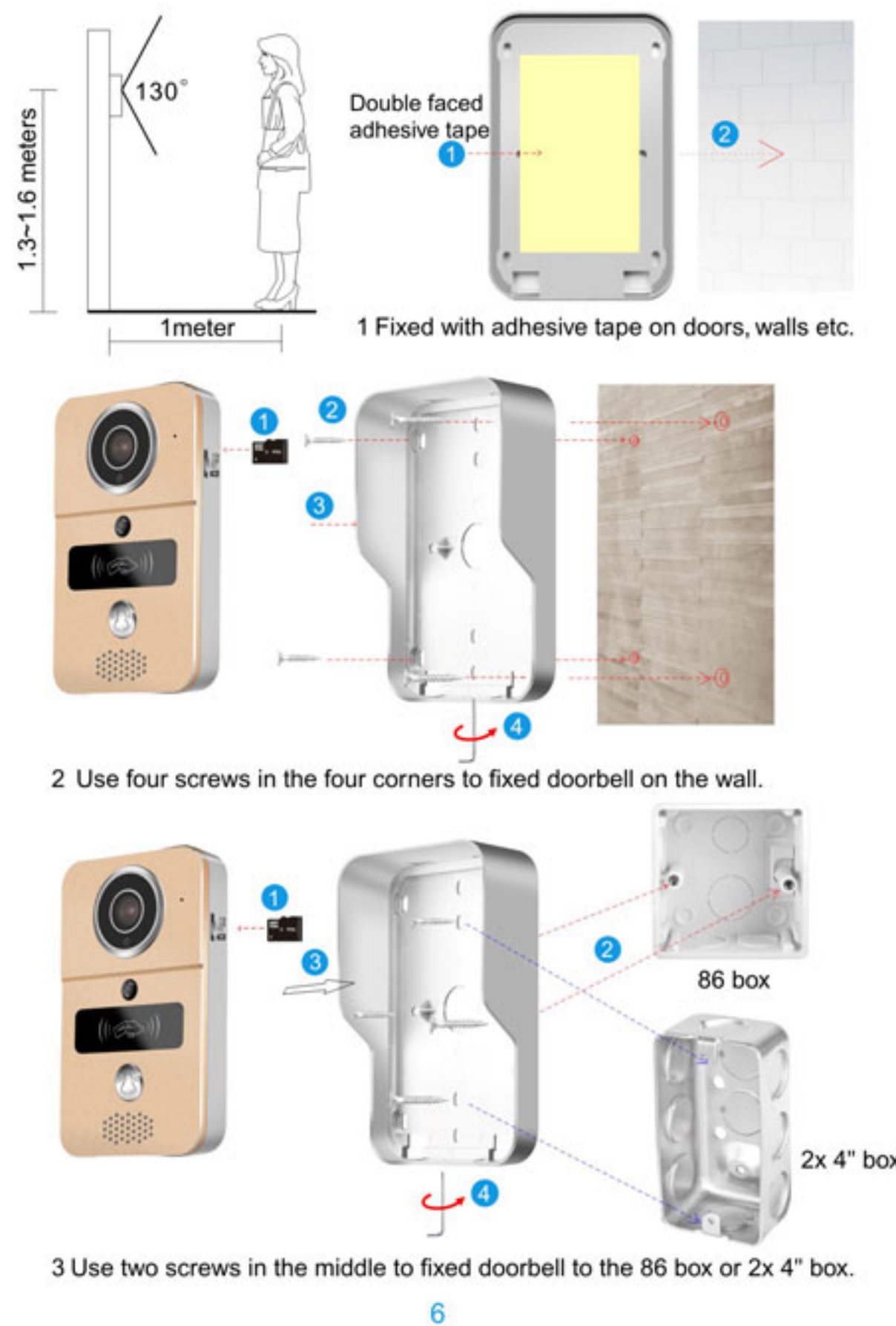
Server	Cloudlink P2P transmission, Adaptive Network
Network	WiFi 802.11 b/g/n or directly connected to a wired network
Audio	G.711 A compression mode
Talk	3Dvoice speech engine technology, Full duplex talk
Video format	H.264
Record mode	Manual Recording, Alarm Recording, Scheduled Recording
External Memory	Micro SD card up to 128GB
Camera	1 megapixels
Camera Lens	2.5mm, 130 degree wide-angle
Night vision	IR CUT no color deviation, B/W night vision within 5meters
Frame rate	25 Frame HD (1280*720), SD (640*480), LD(320*240)
Alarm	Motion detection, PIR detection, Tamper alarm
Push	Push message to smart phone, Send pic to settings mail.
Data interface	TCP/IP, UDP, SMTP, DHCP, UPnP, ONVIF connect NVR
Power adapter	DC9-16V 1A or POE power by connect POE injector
Waterproof level	IP55
Temp/humidity	-20-55 C 10-95% RH
Weight	G.W: 650g

## 3 Parts



## 8 Installation

Installed at the position to avoid to the sun and rain.  
The height of installation is recommended to be 1.3-1.6m.

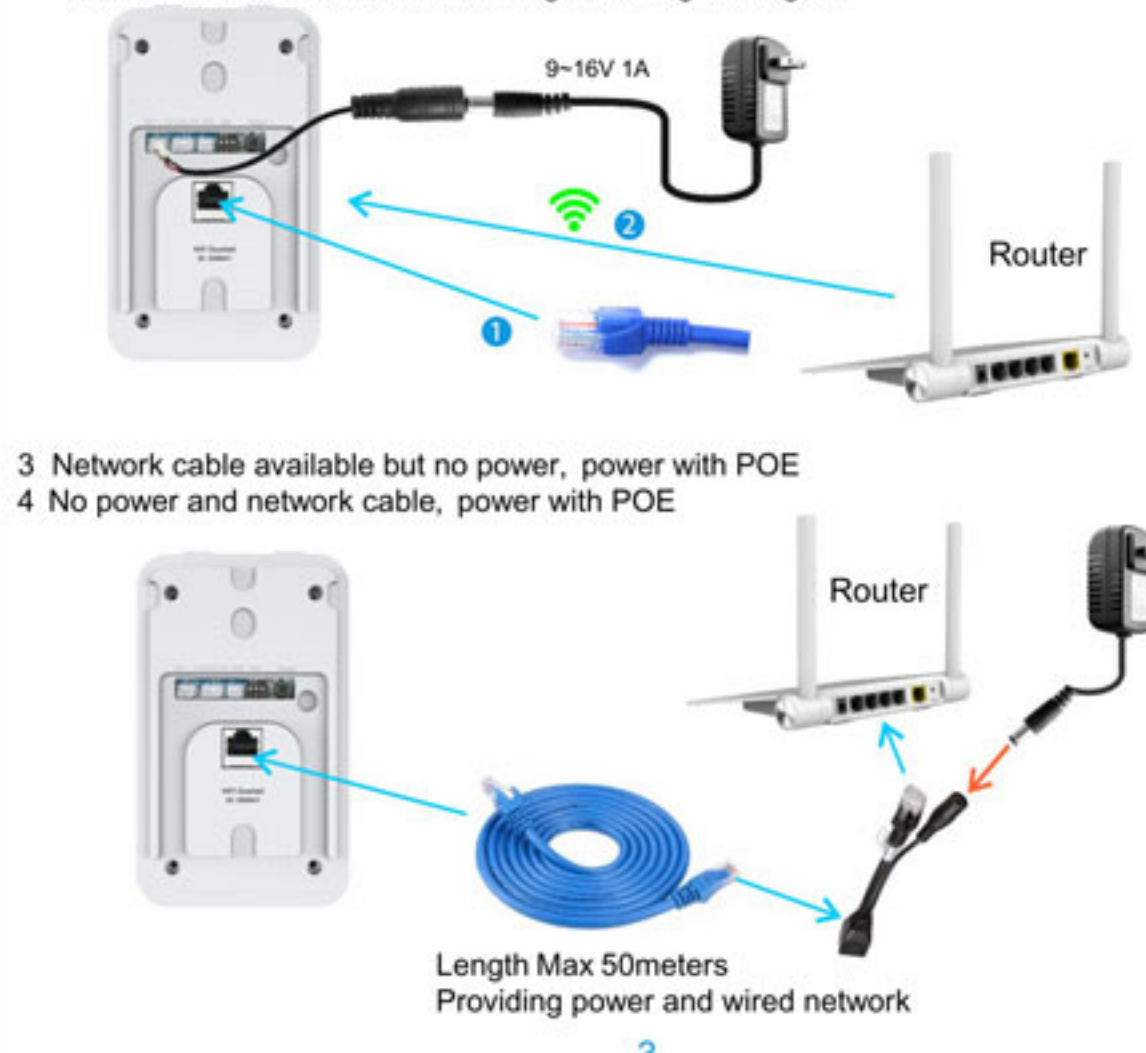


## 4 Accessories



## 5 Network connection and power supply

Doorbell's power and network connection selection, please refer to:  
1 Power and network cable both available, plug the network cable and power.  
2 Power available but no network cable, plug the power and connect to WiFi, try to ensure that the doorbell received signal strength is higher.



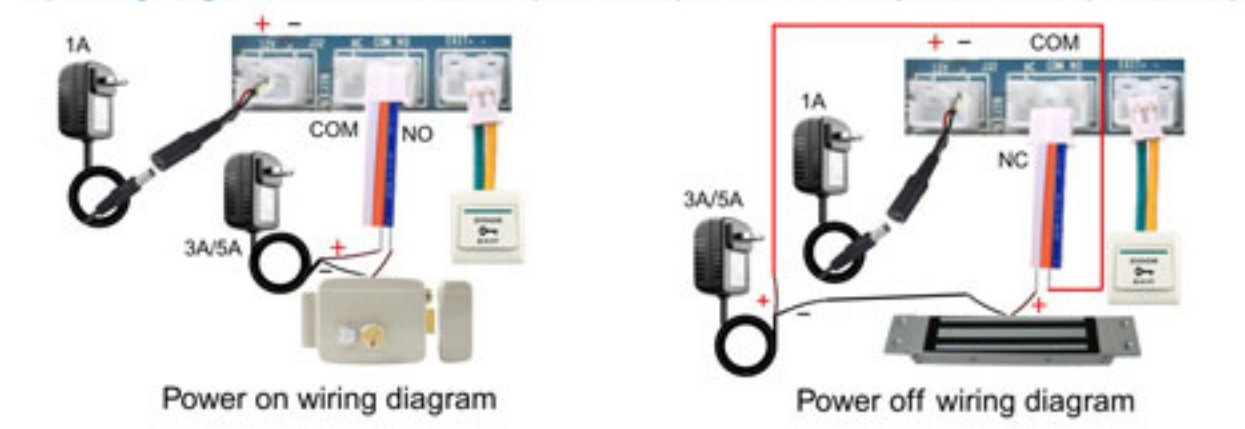
## 6 Unlock Settings

Note: Electronic lock and Access control are no polarity, unlock voltage is 12V. Pls check the spec of unlock power to purchase separately.  
User use 12V/1A power adapter or POE power if not need to connect the lock.

### A) Wiring diagram of connect single power adapter

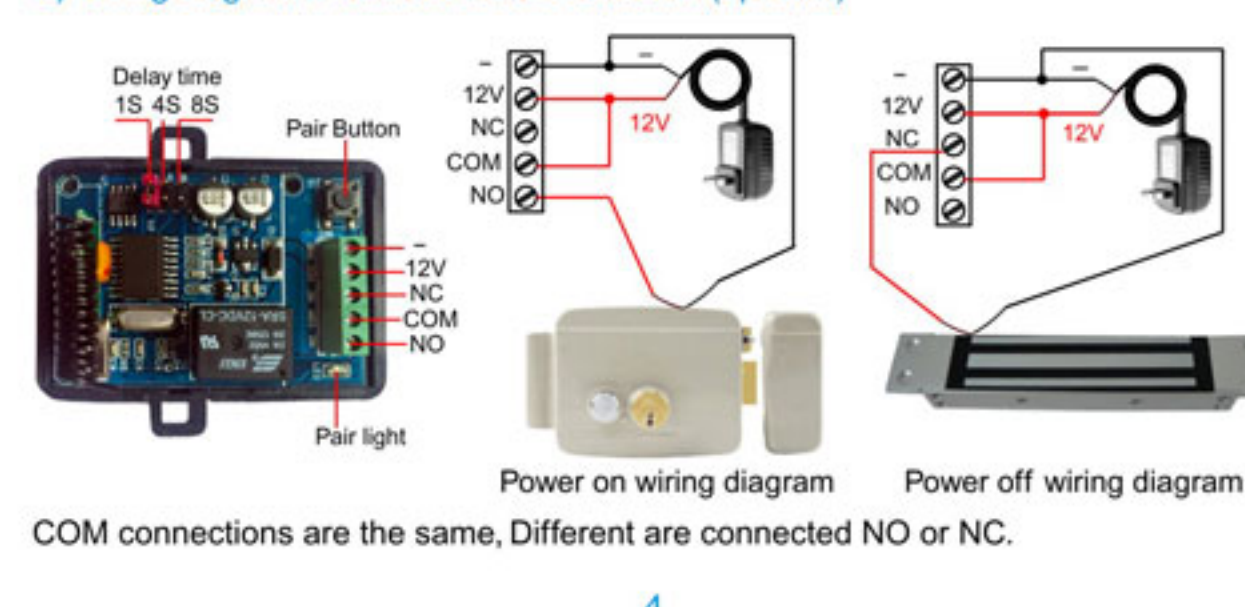


### B) Wiring diagram of connect double power adapter, POE can replace 12V/1A power adapter

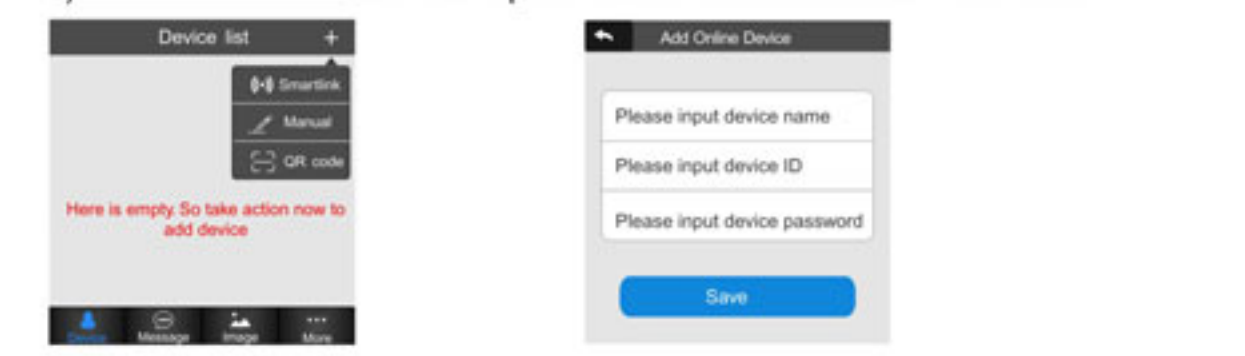


Position	ON	ON	ON	ON
Delay time	1S	4S	8S	16S
	1 2 3	1 2 3	1 2 3	1 2 3

### C) Wiring diagram if connect unlock controller (optional)

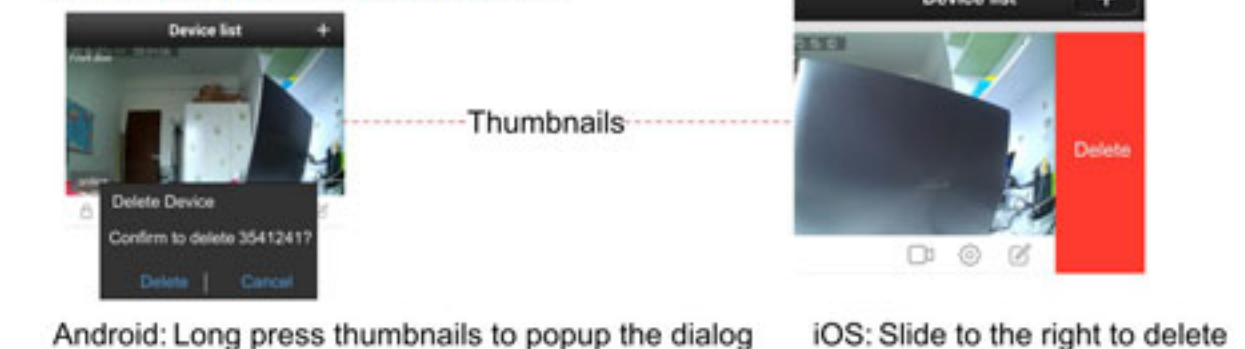


## C) Manual add doorbell to APP if phone and doorbell are not the same LAN



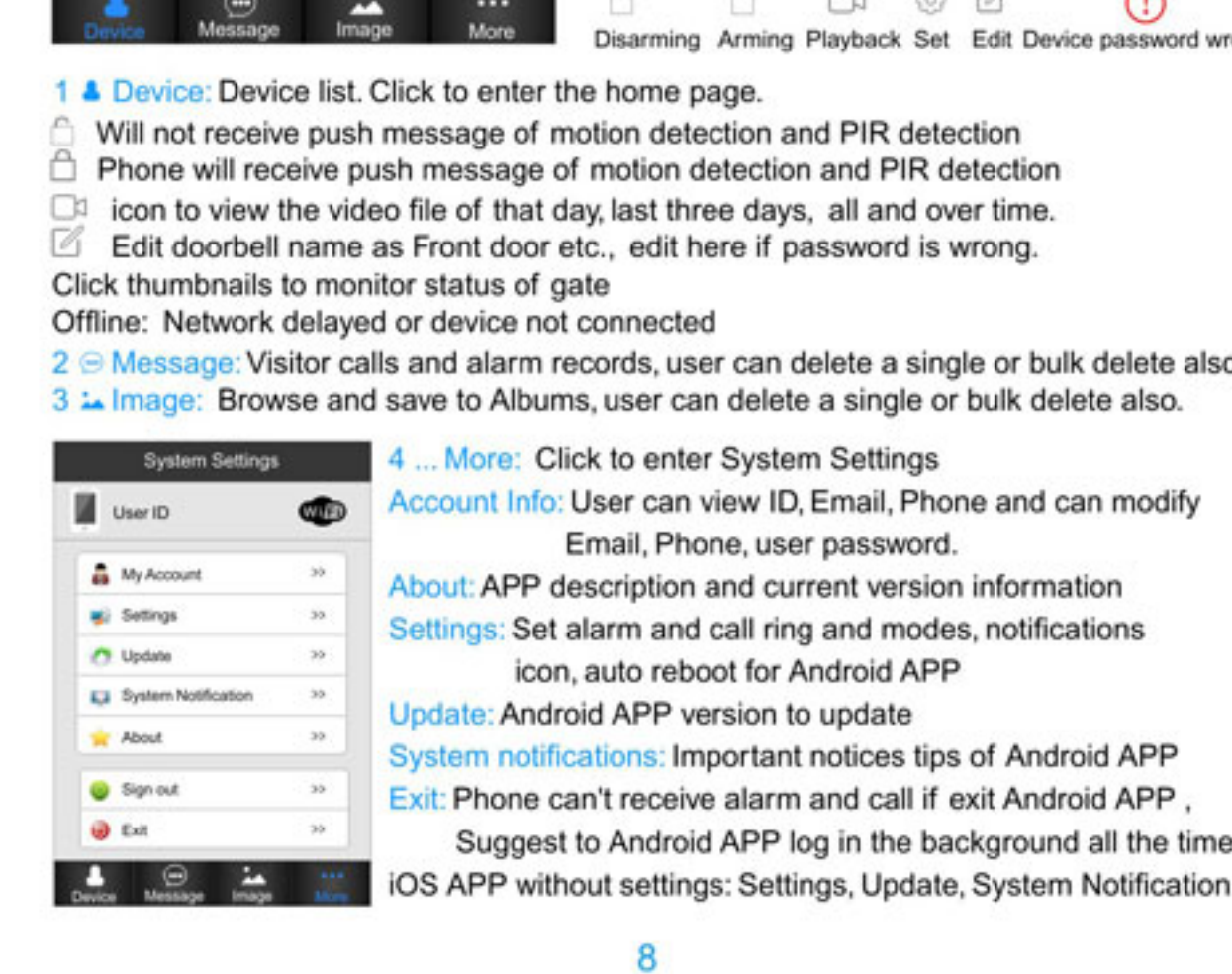
1 Touch "+" then select "Manual" 2 Input device ID, name, password then touch "Save"

## 10 Delete doorbell from APP



Android: Long press thumbnails to popup the dialog iOS: Slide to the right to delete

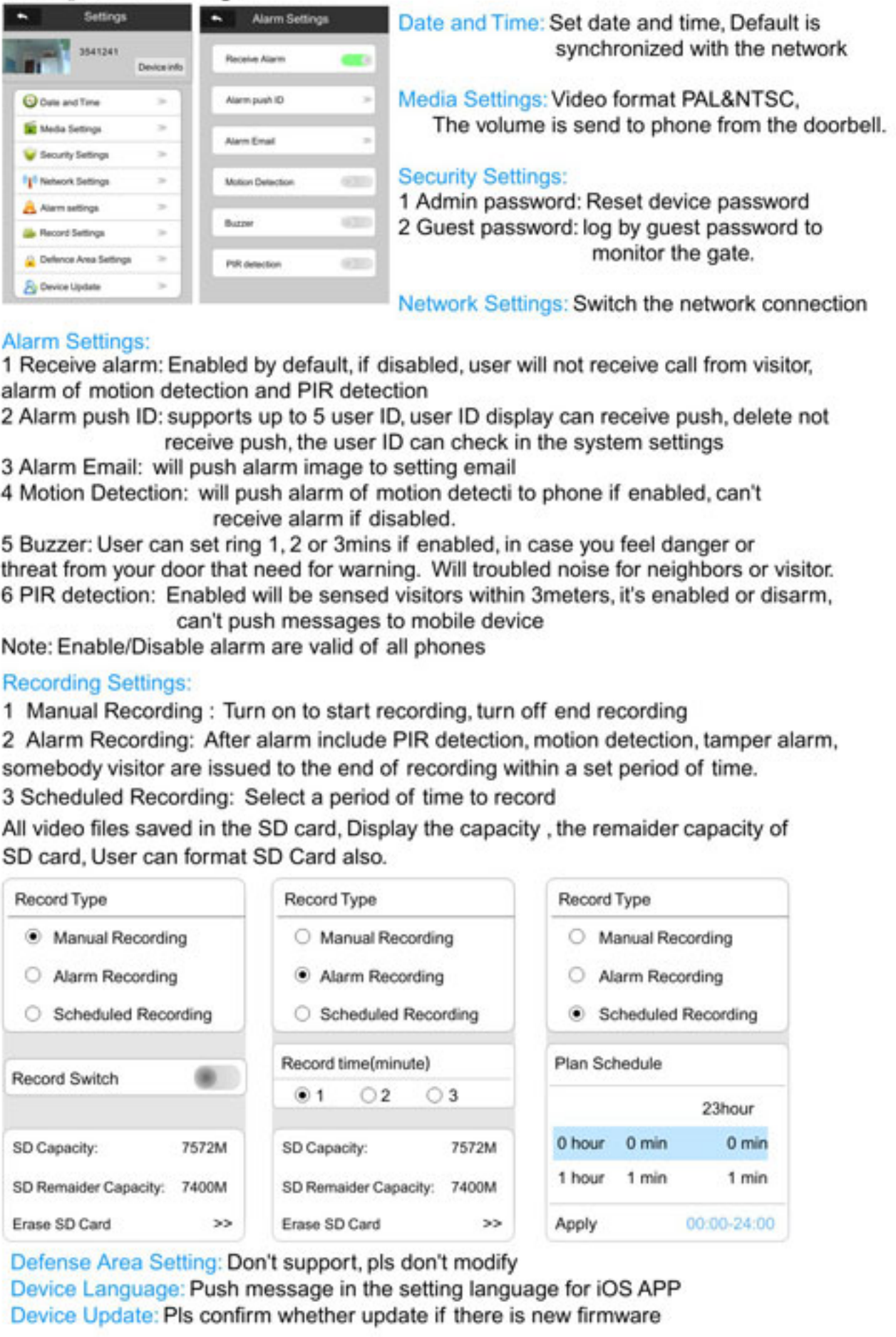
## 11 APP menu introduction



## 14 Troubleshooting

- Q Doorbell cannot connect to WiFi
  - A 1 Confirm WiFi password is correct 2 Doesn't support 5G WiFi
- Q When adding a device, APP don't prompts have new device
  - A Please check doorbell and smart phone whether within same LAN, please manual to add if it's not same LAN.
- Q Prompts wrong password for the smart doorbell
  - A Click on [X] correct into to correct password, Press "Reset" button of doorbell 5s if forgot password to add the doorbell to APP
- Q Doorbell show offline
  - A Confirm connects network cable or WiFi successful
- Q MicroSD card can't recording and covering?
  - A 1 Check MicroSD card or has damaged 2 please check search the time of video files, system time of doorbell
- Q The difference between user ID and doorbell ID
  - A User ID is registered generated, Doorbell ID is its own identification number
- Q The difference between user password and doorbell password
  - A User password is registered setting, Doorbell password is APP connect the doorbell to setting
- Q The difference between edit and modify management password
  - A Editing means input wrong or other users changed the newest password, Modify in setting, means reset a new password
- Q After visitor calls, Android only shock without ringing?
  - A No. Touch "More..." to selects system settings call and alarm rings
- Q Can't receive visitor calls
  - A 1 User ID is not in the alarm account 2 Make sure Android APP in the background and connects WiFi or 3G/4G 3 Push messages to iOS, touch it will enter above interface 4 Receive alarm must be enable.
- Q How to delete the others alarm push account?
  - A Setting->Alarm setting-> In front of alarm push account have delete icon to deleted, then phone can't receive push messages
- Q Push email password is the email password?
  - A No. Input App Password. For example gmail mailbox, An App password is a 16-digit passcode that gives an app or device permission to access your Google Account. If you use 2-Step-Verification and are seeing a "password incorrect" error when trying to access your Google Account, an App password may solve the problem. Note: If you have iOS 8.3 on your iPhone, you will no longer have to use App passwords to use 2-Step Verification. How to generate an App password 1 Visit your App passwords page. You may be asked to sign in to your Gmail Account. 2 At the bottom, click **Select app** and choose the app you're using. 3 Click **Select device** and choose the device you're using. 4 **Select Generate.** 5 Follow the instructions to enter the App password. Note: You may not be able to create an App password for less secure apps. Learn more about allowing less secure apps. Pls check your mail help input App password.

## Click [Settings]



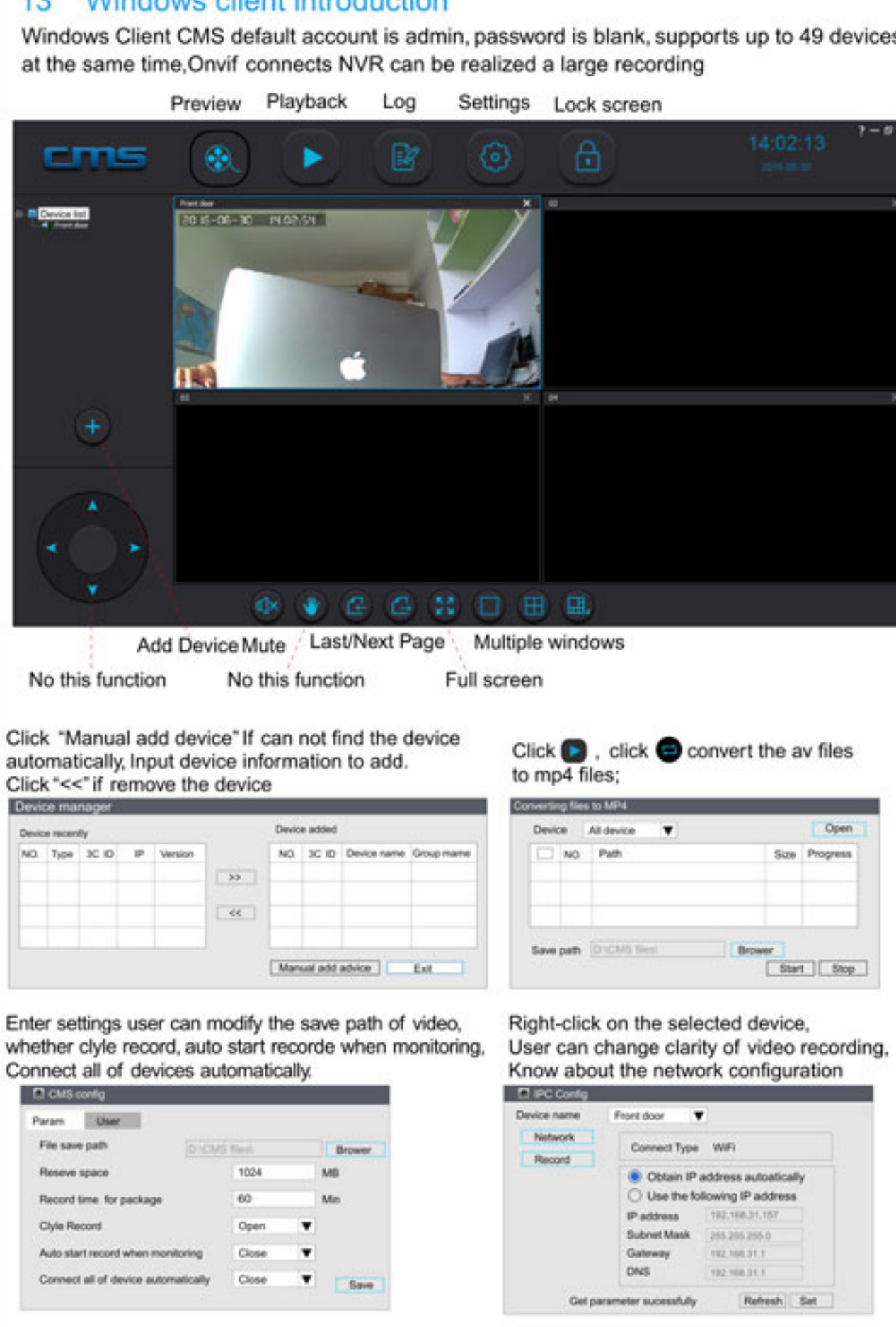
9

## 12 Push Notification



10

## 13 Windows client introduction



11

12